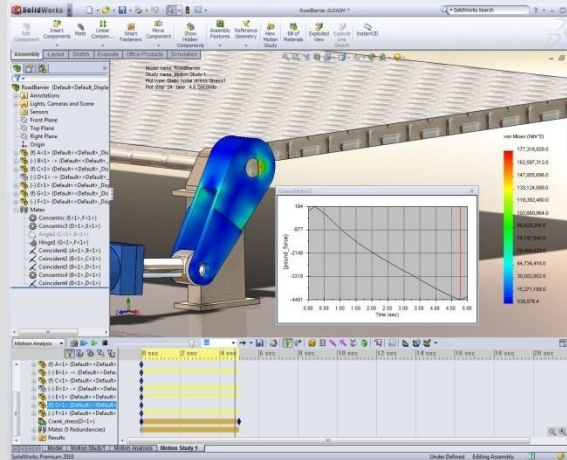


# SolidWorks Simulation Professional Course Information

This course is designed to make SolidWorks Simulation users productive with the SolidWorks Simulation Professional extension. This 1 day course will provide an in-depth coverage on the advanced topics in Finite Element Analysis (FEA), including heat transfer analysis, frequency analysis, fatigue, stability analysis based on the linear buckling concepts, and pressure vessel modulus. Examples of parts and assemblies including those with various gap/contact conditions are reviewed.



Concepts In Production, LLC

Reducing Time to Market

Romans 8:28

Course Length: 1 day

Hours: 8:30am – 4:30pm

Prerequisite:

- SolidWorks Simulation 3 day course
- Knowledge of SolidWorks
- Basis mechanical engineering concepts

Includes:

- Color Training Manual
- Completion Certificate

## Course Contents:

- Frequency Analysis of Parts
- Frequency Analysis of Assemblies
- Buckling Analysis
- Thermal Analysis of Objectives
- Thermal Analysis with Radiation
- Advanced Thermal Stress , 2D Simplification
- Fatigue Analysis
- Advanced Fatigue Analysis
- Drop Test Analysis
- Optimization Analysis
- Pressure Vessel Analysis

•Certified Instructors leading training at our state-of-the art facilities

•Classes offered in several locations in MS, AL, and TN

•CIP is an Authorized SolidWorks and Simulation Training Center

•CIP offers classes on customer site  
Contact the Sales Dept  
662-256-8333

•Schedule:  
[www.conceptsinproduction.com](http://www.conceptsinproduction.com)

•Contact:  
[info@conceptsinproduction.com](mailto:info@conceptsinproduction.com)