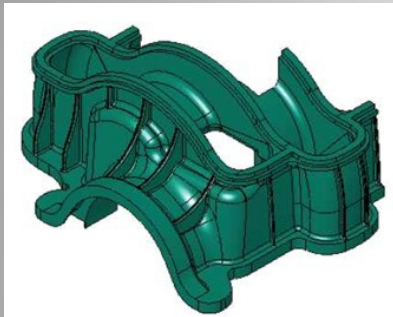


SolidWorks Advanced Surface Modeling Course Information

This course teaches how to build freeform shapes.



Course Contents:

- **Understanding Surfaces**
 - Solids and Surfaces
 - Working with Surface Bodies
 - Why Use Surfaces?
- **Introduction to Surfacing**
 - Similarities Between Solid and Surface Modeling
 - Basic Surfacing
- **Solid-Surface Hybrid Modeling**
 - Using Surfaces to Modify Solids
 - Interchanging between Solids and Surfaces
 - Surfaces as Construction Geometry
 - Making copies of Faces
- **Repairing and Editing Imported**
 - Importing Data
 - Repairing and Editing Imported Geometry
- **Advanced Surface Modeling**
 - Ruled and Lofting Surfaces
 - Modeling the Lower Half
 - Conclusion
 - Design Changes
- **Blends and Patches**
 - Complex Blends & Smoothing Patches
 - Freeform Features
 - Corner Blends
- **Master Model Techniques**

Course Length: 2 days

Hours: 8:30am – 4:30pm

Prerequisite:

- SolidWorks Essentials
- Advanced Part Modeling

Includes:

- Color Training Manual
- Completion Certificate



Concepts In Production, LLC

Reducing Time to Market

Romans 8:28

- Certified Instructors leading training at our state-of-the art facilities
- Classes offered in several locations in MS, AL, and TN
- CIP is an Authorized SolidWorks and Simulation Training Center
- CIP offers classes on customer site
Contact the Sales Dept
662-256-8333

• **Schedule:**
www.conceptsinproduction.com

• **Contact:**
info@conceptsinproduction.com